

NOTE:

COORDINATES SHOWN ARE GRID COORDINATES
DATUM - NAD 83 (1990 ADJUSTMENT)
STATE PLANE FLORIDA EAST ZONE
TRANSVERSE MERCATOR PROJECTION
LINEAR UNIT = U.S. SURVEY FEET
ALL DISTANCES ARE GROUND (UNLESS OTHERWISE NOTED)
SCALE FACTOR = 1.0000356
PLAT BEARING = GRID BEARING
GROUND DISTANCE X SCALE FACTOR = GRID DISTANCE

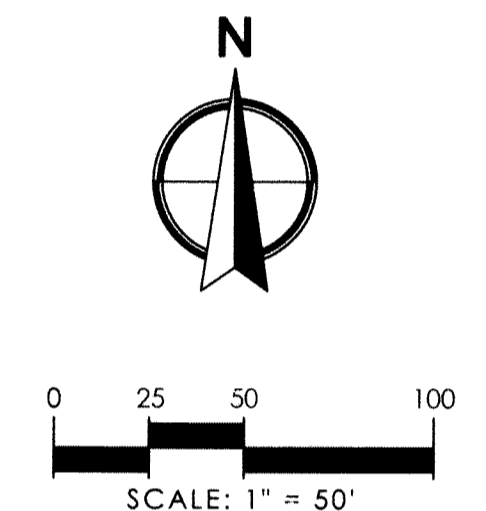
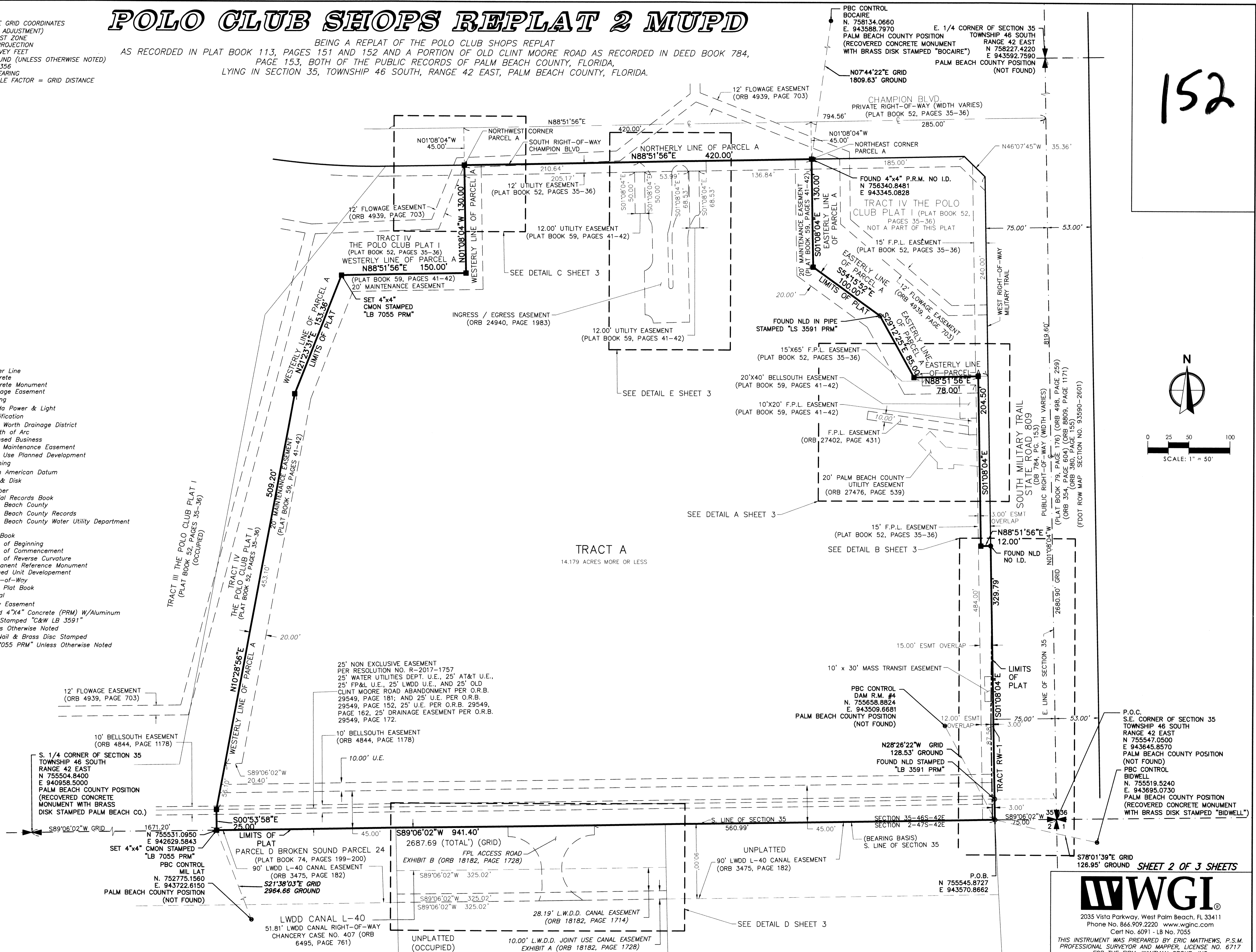
POLO CLUB SHOPS REPLAT 2 MUPD

BEING A REPLAT OF THE POLO CLUB SHOPS REPLAT
AS RECORDED IN PLAT BOOK 113, PAGES 151 AND 152 AND A PORTION OF OLD CLINT MOORE ROAD AS RECORDED IN DEED BOOK 784,
PAGE 153, BOTH OF THE PUBLIC RECORDS OF PALM BEACH COUNTY, FLORIDA,
LYING IN SECTION 35, TOWNSHIP 46 SOUTH, RANGE 42 EAST, PALM BEACH COUNTY, FLORIDA.

152

LEGEND

- Center Line
Concrete
Concrete Monument
Drainage Easement
Easting
Florida Power & Light
Identification
Lake Worth Drainage District
Length of Arc
Licensed Business
Lake Maintenance Easement
Multi Use Planned Development
Northing
North American Datum
Nail & Disk
Number
Official Records Book
Palm Beach County
Palm Beach County Records
Palm Beach County Water Utility Department
Page
Plat Book
Point of Beginning
Point of Commencement
Point of Reverse Curvature
Permanent Reference Monument
Planned Unit Development
Right-of-Way
Road Plat Book
Typical
Utility Easement
Found 4"x4" Concrete (PRM) W/Aluminum Disc Stamped "C&W LB 3591" Unless Otherwise Noted
Set Nail & Brass Disc Stamped "LB 7055 PRM" Unless Otherwise Noted



WGI logo and contact information: 2035 Vista Parkway, West Palm Beach, FL 33411. Phone No. 866.909.2220 www.wginc.com. Cert No. 6091 - LB No. 7055. THIS INSTRUMENT WAS PREPARED BY ERIC MATTHEWS, P.S.M. PROFESSIONAL SURVEYOR AND MAPPER, LICENSE NO. 6717 FOR THE FIRM: WANTMAN GROUP, INC.